



SEP - DEC 2021

nac.gov.sg/silverarts

ARTS & AGEING CIRCLE

16 SEPTEMBER 2021

2.30PM – 5.00PM

The **Arts & Ageing Circle** brings together artists, social sector and healthcare practitioners, as well as community leaders and funders to advocate the value of the arts for seniors.

In this edition, we will look at the **role of the arts in a rapidly changing environment** and the **challenges and opportunities presented by the pandemic**. We also look to continue exploring points of convergence in our engagement of the senior sector.

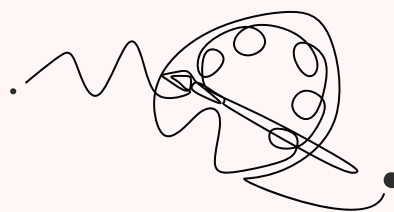
Organised By



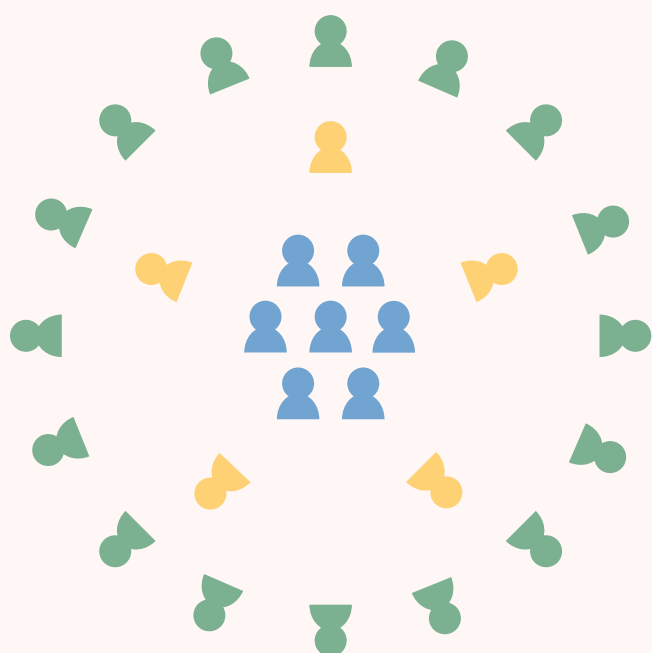
Supported By



PROGRAMME



2.20pm	Attendees to enter Zoom meeting
2.30pm	Introduction
2.45pm	Overview of senior sector landscape and resources by Charmaine Tan, Senior Assistant Director, Healthy Ageing Department, Agency for Integrated Care
3.00pm	Initiating and sustaining arts projects with senior centric organisations by Edwin Wee and Rachel Lum, Co-Directors & Founders, Decadance Co Limited
3.10pm	Shaping arts programmes to complement existing services and programmes for seniors by Chai Chee Mei, Cluster Programme Manager, NTUC Health Co-operative Limited
3.20pm	Collaborative approaches in exploratory projects by Karen Koh, Art Therapist-Artist, SEED Collective, and Michael Cheng, Applied Drama Practitioner and Educator, SEED Collective
3.35pm	Moderator-led discussion
4.05pm	Q&A
4.15pm	NAC announcements
4.25pm	Pitching session
4.55pm	Closing
5.00pm	End



SPEAKERS AND MODERATOR-HOST

Share insights and perspectives from arts, social and health sectors on the role of the arts in a rapidly changing environment.

ACTIVE PARTICIPANTS

Deepen conversations and enhance discussions by raising pertinent and critical questions to Speakers.

LISTENERS

Enjoy flow of conversations that happen during the session and raise questions during Q&A.

SPEAKERS



Charmaine Tan

Senior Assistant Director, Healthy Ageing Department, Agency for Integrated Care

Charmaine is the programme lead for the AIC Wellness Programme at the Agency for Integrated Care (AIC). The programme aims to enhance access to meaningful and purposeful engaging activities for older persons (pre-frail and frail) living in the community and using Community Care facilities. Some initiatives piloted under the Programme include partnerships with the arts, heritage and sports sectors.

Edwin Wee and Rachel Lum

Co-Directors & Founders, Decadance Co Limited

Decadance Co is a contemporary dance company led by Edwin and Rachel. Their mission is to be intergenerational, ageless and accessible in their work. Their Decasilver programme brings the benefits of contemporary dance to seniors, by blending movement, music and rhythm to improve their physical, emotional and cognitive wellbeing. Edwin and Rachel have been working with seniors since 2009 and 2016 respectively. They have also been actively choreographing and performing contemporary dance locally and abroad.



Chai Chee Mei

Cluster Programme Manager, NTUC Health Co-operative Limited

Chee Mei has 17 years of working experience in the community, and has reached out to dysfunctional families, as well as underserved children and seniors. She currently focuses on active seniors in the community and has built a network amongst like-minded community work practitioners. Passionate about the arts, she has witnessed how arts activities have helped many seniors discover their hidden talents and enhance their active lifestyles.

Karen Koh

Art Therapist-Artist, SEED Collective

Michael Cheng

Applied Drama Practitioner and Educator, SEED Collective

SEED Collective comprises Karen and Michael. Their work is participatory and multi-disciplinary in nature, with a strong focus on applied drama practices and visual arts. SEED Collective explores individual narratives that make up the multi-layered identity of communities.



MODERATOR-HOST



Dr Michael Tan

Associate Professor, Lab4Living, Sheffield Hallam University

Michael is a Singaporean arts-health researcher, artist and educator. As a leading advocate for arts and design for health in Singapore, he has developed interdisciplinary research collaborations at the intersection of creativity and wellbeing, and through continued education and public engagement efforts, aims to transform the landscape of care. He is currently at Lab4Living in Sheffield Hallam University in the UK – a transdisciplinary creative lab focusing on creativity and human flourishing.

ACTIVE PARTICIPANTS



Euginia Tan

Writer

Euginia is a Singaporean writer who writes poetry, creative non-fiction and plays. She enjoys cross-pollinating art into multidisciplinary platforms and reviving stories.



Joanne Lio

Visual Artist and Art Educator

Joanne enjoys working with the seniors since 2012. Her interest in mixed media works and contemporary art, allows her to explore the ability of art to deconstruct meanings while challenging human perspectives. She organises and conducts a range of meaningful process-based art activities for different senior healthcare settings.



Jeremy Mok

Centre Manager, Active Ageing Centre, Lions Befrienders

Jeremy loves interacting with seniors and made a career switch to the social service sector four years ago. He strongly believes in the benefit of active ageing in the community for seniors and has been actively reaching out to over 200 seniors staying in Tampines through programmes offered by two Lions Befrienders Senior Activity Centres.

Siti Maryam Khan

Manager, Integrated Programming & Partnerships, Wisma Geylang Serai

Maryam oversees the curated and commissioned arts and cultural programmes in Wisma Geylang Serai. She also manages Orkestra Melayu Singapura (OMS)/The Singapore Malay Orchestra.



Koh Hui Ling

Co-Artistic Director, Drama Box

Hui Ling finds meaning in the process of community engagement and the participation of nonartists in the art-making, evident in her works such as the *IgnorLAND* series, *Chinatown Crossings* and *Goli - The Moving Theatre*, Singapore's first inflatable theatre meant to transform spaces and provide alternative avenues for public dialogue.